



# 102 Knighton Fields Road East

, Leicester, LE2 6DQ

Asking Price £190,000

An excellent opportunity for first-time buyers or investors! This charming bay-fronted mid-terrace home is full of character and offered with no upward chain. Retaining lovely original features, it presents a fantastic chance to add value and personalise throughout. With plenty of potential to enhance and modernise, this property is ideally situated close to a range of local amenities. A smart investment in a sought-after location – early viewing is highly recommended!

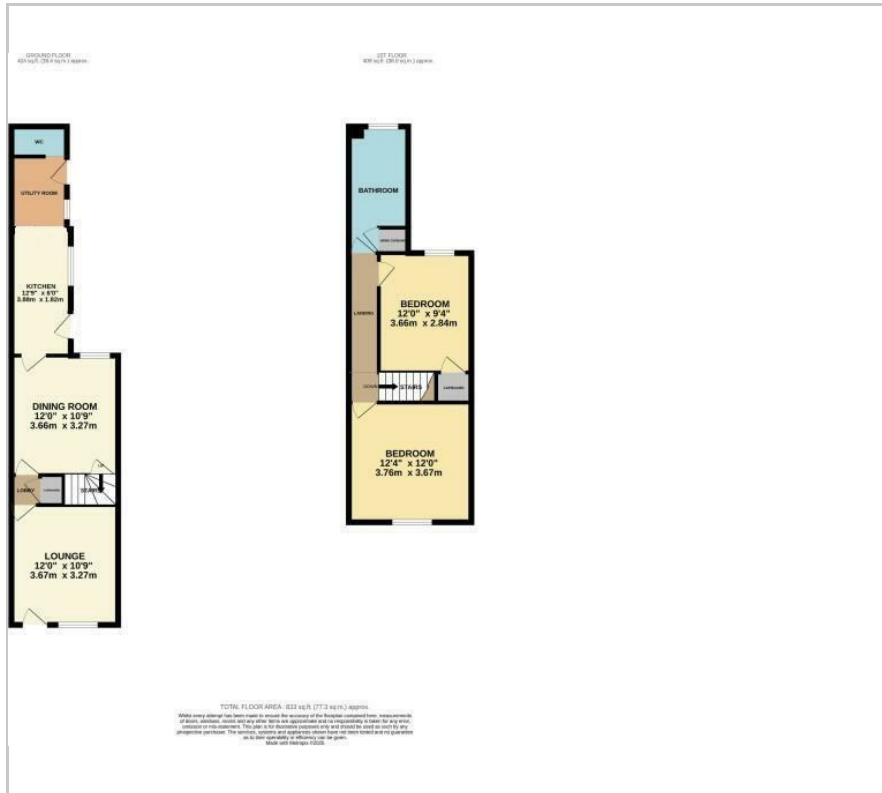
- Charming bay-fronted mid-terrace home
- Offered with no upward chain
- Ideal opportunity for first-time buyers or investors
- Two double bedrooms
- Must be viewed

### Viewing

Please contact our Berkley Leicester Office on 0116 2544755 if you wish to arrange a viewing appointment for this property or require further information.



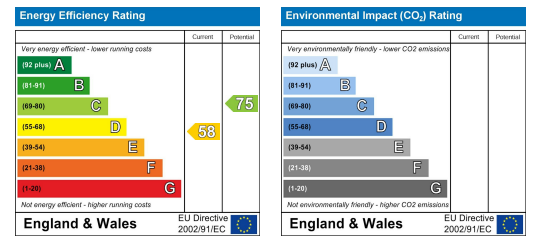
# Floor Plan



# Area Map



# Energy Efficiency Graph



These particulars, whilst believed to be accurate are set out as a general outline only for guidance and do not constitute any part of an offer or contract. Intending purchasers should not rely on them as statements of representation of fact, but must satisfy themselves by inspection or otherwise as to their accuracy. No person in this firm's employment has the authority to make or give any representation or warranty in respect of the property.